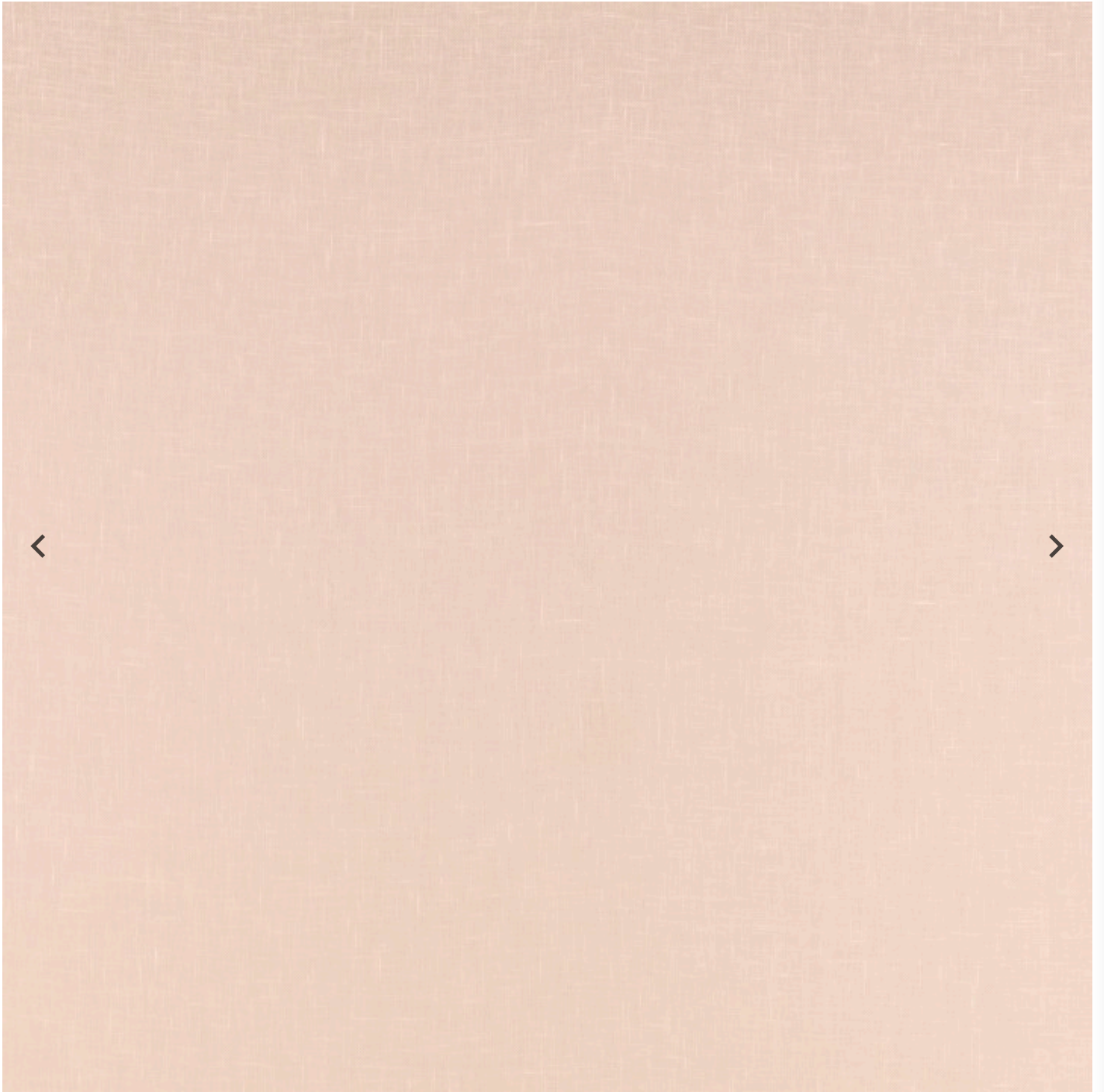


ROMO



NEW

Kori FR Hoya

8050/08

Washable Recycled Sheer

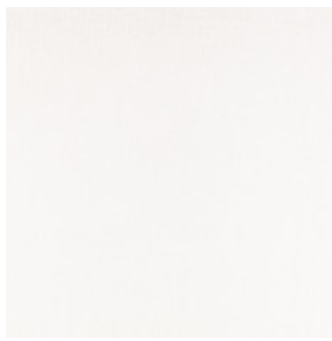
Collection: Ioka FR

13 Available Colours [View All](#)





Hoya



Egret



Vanilla



Jasmine

Description



Metres

Metres

Our fabrics and wallcoverings are available worldwide through an extensive network of Interior Designers, Retailers and Distributors. Please contact your nearest stockist to help with your order.

[Find your nearest stockist](#)

Product Info

Technical Information

Composition: 100% RPL

Width: 300 cms (118.1")

Pattern Repeat:

After Care:

Usage:

Fire Ratings: [View Fire Ratings](#)

Sample Size: 17cm x 13cm

Product Information

Colour: Hoya

Design Style: Plain / Solid

Fabric Type: Sheer / Voile
Wide Width

Performance: Washable

Environmental: Recycled yarns
Oeko-Tex 100 Certified
REACH Compliant
PFAS Free

Oeko-Tex Certification Number: IS015161917 OETI



**STANDARD
100**



View All 13 Colours



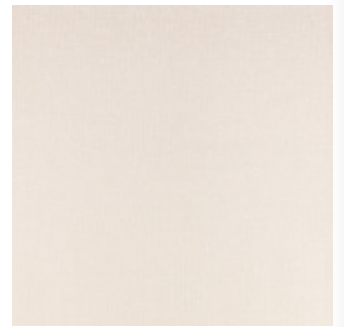
Hoya
8050/08



Egret
8050/01



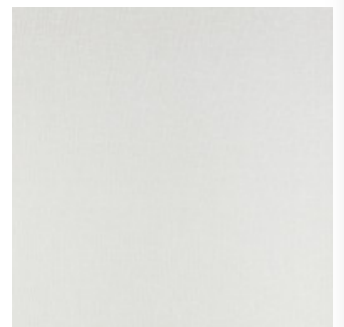
Vanilla
8050/02



Jasmine
8050/03



Crema
8050/04



Fog
8050/05





Teak
8050/06



Pink Clay
8050/07



Lemongrass
8050/09



Mint
8050/10



Solent
8050/11



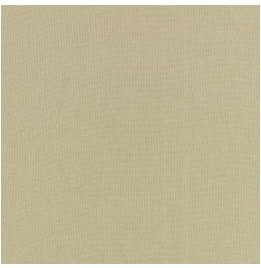
Moonstone
8050/12



Porcelain
8050/13



Also in the Collection

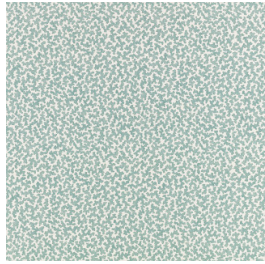


Ioka FR

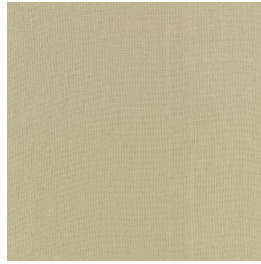
Recently Viewed



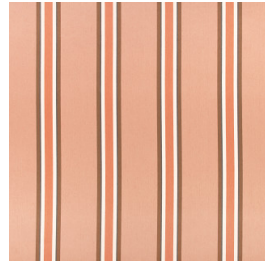
Kezia Matcha
8058/02



Junie Agate
8064/04



Ioka FR Lemongrass
8051/17



Elson Tuscan Pink
8055/04