

wineo



PURLINE[®]
ORGANIC FLOORING

wineo 1500

CONTENT

PURLINE® wineo 1500	05
high-performance	07
design diversity	09
sustainability	11
Operating costs	13
wineo 1500 plank + tile	15
plank wood	17
tile stone	31
tile graphic	35
tile textile	37
wineo 1500 roll	39
roll chip	41
roll wood	49
wineo 1500 fusion	53
wineo 1500 sea	59
Product composition	61
Accessories	62
Service	63
Certifications	65
Technical characteristics	67

PURLINE® lets you feel
the power of nature
under your feet.

PURLINE® creates
healthy living spaces
that are good for people
and the environment.

wineo 1500

Powering your projects. Protecting our nature.

wineo PURLINE® is a high-quality polyurethane floor covering that impresses with its outstanding performance. It combines sustainable ingredients with durable resistance. Thanks to its natural and authentic designs, the resilient floor covering also offers maximum design freedom – the ideal solution for demanding contract areas that require both functionality, sustainability and style.

high-performance

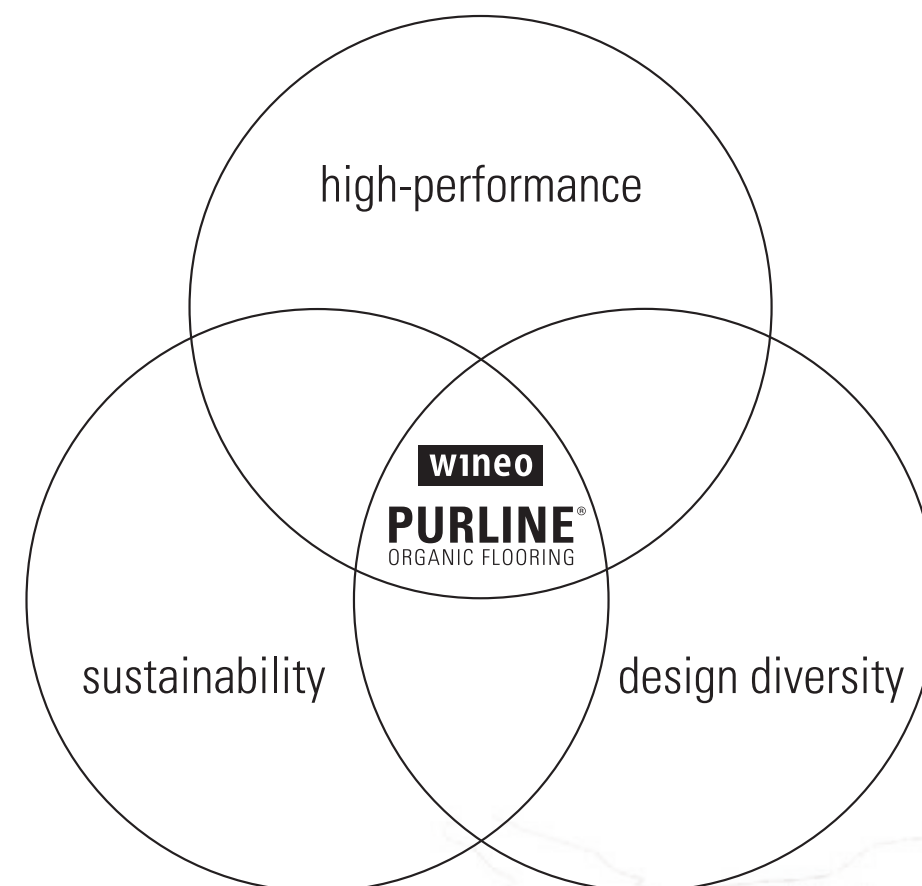
PURLINE® wineo 1500 draws its strength from the best components of nature and combines them to create a sustainable subfloor – so hard-wearing, durable and resilient that it retains its exceptional quality and strength for many years.

design diversity

PURLINE® wineo 1500 impresses with a wide colour spectrum of authentic designs. This great variety opens up countless possibilities for creative room concepts and fulfils the desire for individuality.

sustainability

Developed with the utmost care and consideration for nature, PURLINE® wineo 1500 is based on the best natural ingredients, such as vegetable oils and mineral components. This makes it an extremely healthy and sustainable floor covering.



high-performance

Durable for heavy-duty use

In addition to excellent residual indentation behaviour of ~0.10 mm (according to EN ISO 24343 1), PURLINE® wineo 1500 scores with outstanding resilience.

Good rollability

Even heavy luggage, shopping and serving trolleys as well as hospital and care beds can be moved easily.

Suitable for high humidity areas

PURLINE® wineo 1500 perfectly suitable for high humidity rooms such as the kitchen or bathroom.

Outstanding UV resistance

Compared to other floors in its class, PURLINE® wineo 1500 has a very high lightfastness ≥ 7 .

Particularly temperature-resistant

PURLINE® wineo 1500 can also withstand the effects of high temperatures, e. g. changes in the room climate.

High Comfort

PURLINE® wineo 1500 is kind to joints, warm to the feet, with excellent walking and standing support. Installed on underfloor heating, the design flooring conveys an extra sense of cosy warmth.

Safe in case of fire

PURLINE® wineo 1500 is flame-retardant and fire-toxicologically harmless. The low smoke development ensures that escape routes are more visible in the event of a fire.

Coating free

No initial maintenance is required for PURLINE® wineo 1500. The floor covering does not need to be maintained during its entire service life either.

Quite

The low noise level creates a quiet environment that can have a positive effect on mental health.

Low-reflection

Thanks to a low degree of reflection, PURLINE® wineo 1500 creates a calm surface effect.



Application areas

Healthcare

Store Building

Hotels

Restaurants

Education

Office and Administration Buildings

Public Buildings

Apartment Buildings

Maritime


design diversity


Thanks to a wide range of decors and colours,
PURLINE® wineo 1500 offers the right design for every area.

From natural to creative - and a wide range of formats
and colours – a wide variety of design concepts
and wishes can be realised.

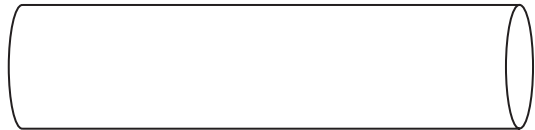
Object relevant formats

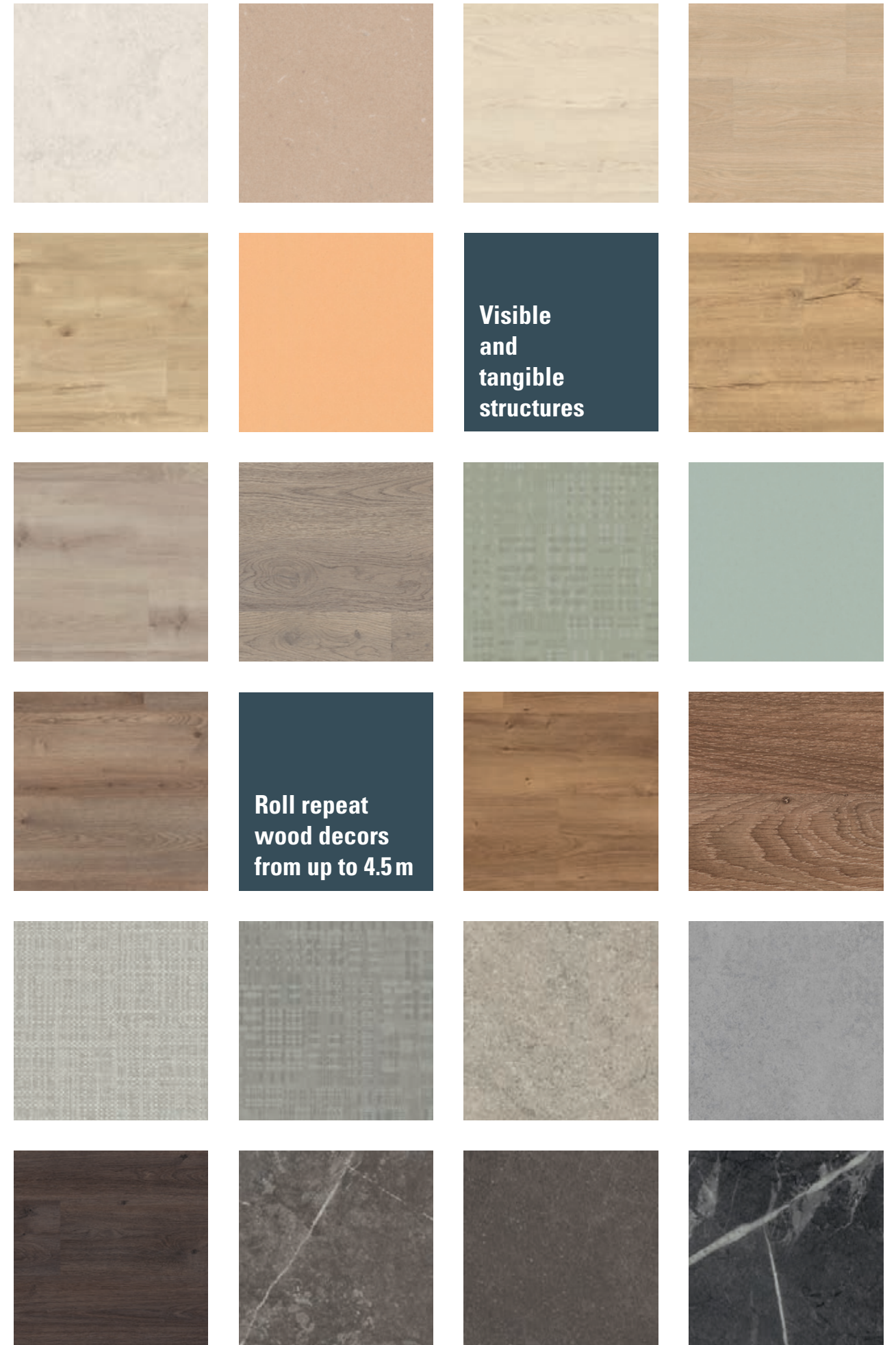
 480 × 80 mm
wood XS (MOQ 50 m²)

 1200 × 200 mm
wood L

 1500 × 250 mm
wood XL

 1000 × 500 mm
stone XL | graphic XL | textile XL | fusion XL

 20 × 2 m
chip | wood | fusion



sustainability

Harmless to health

PURLINE® wineo 1500 is REACH-compliant and free from PVC, phthalates, plasticisers and halogens.

Good indoor air quality

PURLINE® wineo 1500 does not release any harmful substances into the room air and is without the addition of chlorine, plasticisers or solvents.

Odour neutral

Without the addition of chlorine or solvents, it does not develop any odours – either during installation or use.

Quiet

The low noise level creates a quiet environment, which can have a positive effect on well-being.

Made with



Castor



Chalk

GOOD TO KNOW!

The basic principle of the Cradle to Cradle® philosophy is convincing and points the way for the future. The international certificate differs significantly from other environmental labels. It is awarded exclusively for a proven overall sustainability balance sheet, in accordance with the strictest criteria and in-depth testing. The entire product life cycle is considered, as are its global effects. Cradle to Cradle® certification makes a positive contribution to building certification in accordance with LEED, BREEAM, DGNB and WELL.



// Material health

// Product circularity

// Clean air and climate protection

// Water & soil stewardship

// Social fairness



You can find our sustainability report here:

Operating costs at a glance

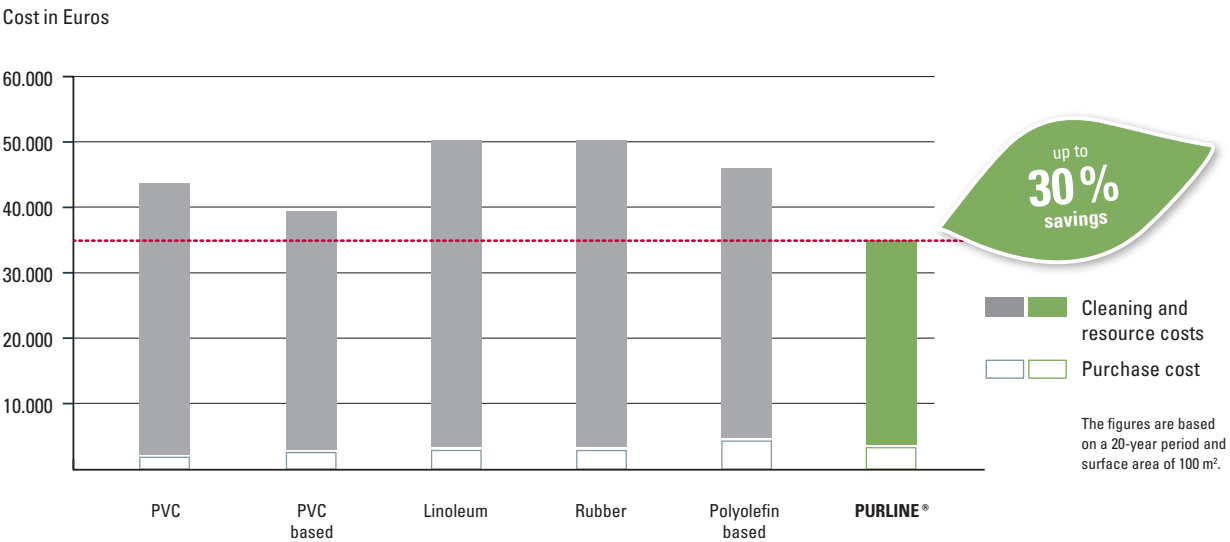
Durable and easy to clean

Conventional cleaners can be used without any problems:

- the closed surface makes cleaning particularly easy
- additional polishing or maintenance is not necessary
- all surface disinfectants can be used
- various tests prove effective disinfectability
- contrast agents commonly used in hospitals do not discolour PURLINE® floor coverings
- no marks left by furniture after a short regeneration period
- no visible wear due to mechanical stress
- extremely high resistance to sunlight

Demonstrably economical

The PFIFF Institute confirms a lifetime cost saving of 30 % on average compared to all standard floor coverings on the market.





plank + tile

wineo 1500 plank | wood



Siena Oak Nature PL15011WL 1200 × 200 mm



Newport Oak Natural PL15008WL 1200 × 200 mm | PLR393C 20 × 2 m



Canyon Oak Sand PL15001WL 1200 × 200 mm



Newport Oak Brown PL15007WL 1200 × 200 mm | PLR394C 20 × 2 m



Newport Oak Natural

wineo 1500 plank + tile | wood



Iceland Pine Light

PL15004WL 1200 × 200 mm



Ravenna Oak Beige

PL15009WL 1200 × 200 mm



Durban Oak Taupe

PL15003WL 1200 × 200 mm | PLR391C 20 × 2 m



Ravenna Oak Brown

PL15010WL 1200 × 200 mm



wineo 1500 plank | wood



Lodge Oak Brown PL15005WL 1200 × 200 mm



Lodge Oak Dark PL15006WL 1200 × 200 mm



Durban Oak Brown PL15002WL 1200 × 200 mm | PLR392C 20 × 2 m



Aspen Oak Dark PL15000WL 1200 × 200 mm



Durban Oak Brown | Steel Grey



Fjord Maple Beige **PL15205WXL** 1500 × 250 mm | **PL15205WXS** 480 × 80 mm



Siena Oak Beige **PL15219WXL** 1500 × 250 mm | **PL15219WXS** 480 × 80 mm



Intensive Oak Nature **PL15208WXL** 1500 × 250 mm | **PL15208WXS** 480 × 80 mm



Siena Oak Honey **PL15221WXL** 1500 × 250 mm | **PL15221WXS** 480 × 80 mm | **PLR15221W** 20 × 2 m



Fine Oak Light **PL15203WXL** 1500 × 250 mm | **PL15203WXS** 480 × 80 mm | **PLR15203W** 20 × 2 m



Mayfield Oak Nature **PL15213WXL** 1500 × 250 mm | **PL15213WXS** 480 × 80 mm | **PLR15213W** 20 × 2 m



Fine Oak Nature **PL15204WXL** 1500 × 250 mm | **PL15204WXS** 480 × 80 mm



Intensive Oak Amber **PL15206WXL** 1500 × 250 mm | **PL15206WXS** 480 × 80 mm

wineo 1500 plank | wood



Canyon Oak Honey

PL15200WXL 1500 × 250 mm | PL15200WXS 480 × 80 mm



Crafted Oak

PL15201WXL 1500 × 250 mm | PL15201WXS 480 × 80 mm



Real Oak Nature

PL15217WXL 1500 × 250 mm | PL15217WXS 480 × 80 mm



Melbourne Oak Natural

PL15223WXL 1500 × 250 mm | PL15223WXS 480 × 80 mm | PLR395C 20 × 2 m



Crafted Oak | Canyon Oak Honey



wineo 1500 plank | wood 25

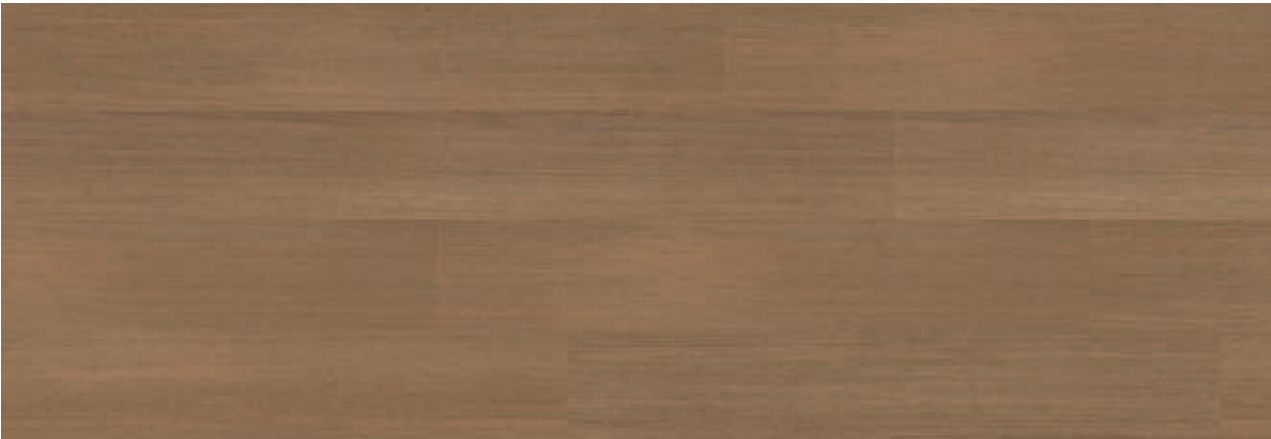


Photos: © Laura Thiesbrummel





Mayfield Oak Beige **PL15211WXL** 1500 × 250 mm | **PL15211WXS** 480 × 80 mm



Fine Oak Brown **PL15202WXL** 1500 × 250 mm | **PL15202WXS** 480 × 80 mm | **PLR15202W** 20 × 2 m



Intensive Oak Taupe **PL15209WXL** 1500 × 250 mm | **PL15209WXS** 480 × 80 mm



Intensive Oak Brown **PL15207WXL** 1500 × 250 mm | **PL15207WXS** 480 × 80 mm



Mayfield Oak Taupe **PL15214WXL** 1500 × 250 mm | **PL15214WXS** 480 × 80 mm | **PLR15214W** 20 × 2 m



Real Oak Taupe **PL15218WXL** 1500 × 250 mm | **PL15218WXS** 480 × 80 mm

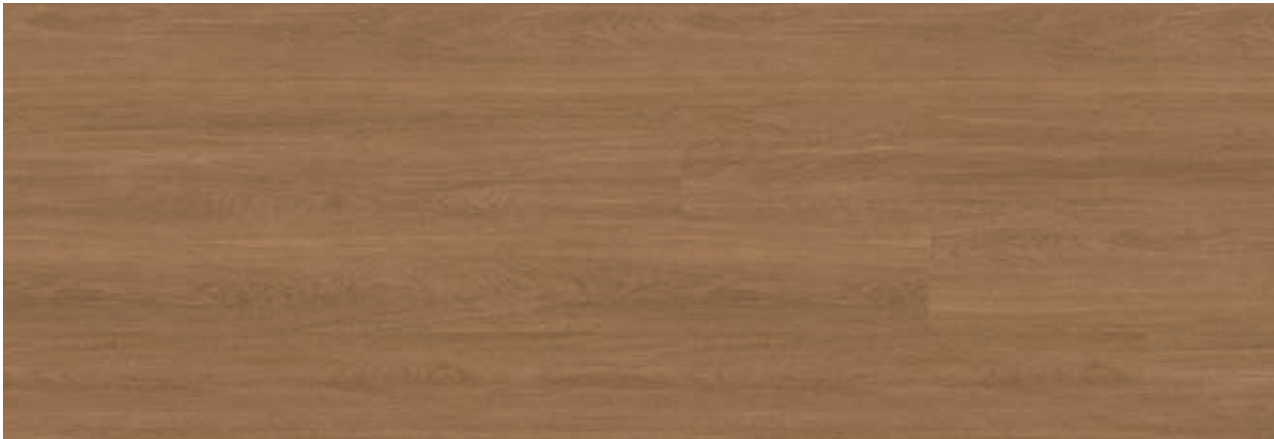


Ravenna Oak Nature **PL15215WXL** 1500 × 250 mm | **PL15215WXS** 480 × 80 mm



Real Oak Amber **PL15216WXL** 1500 × 250 mm | **PL15216WXS** 480 × 80 mm

wineo 1500 plank | wood



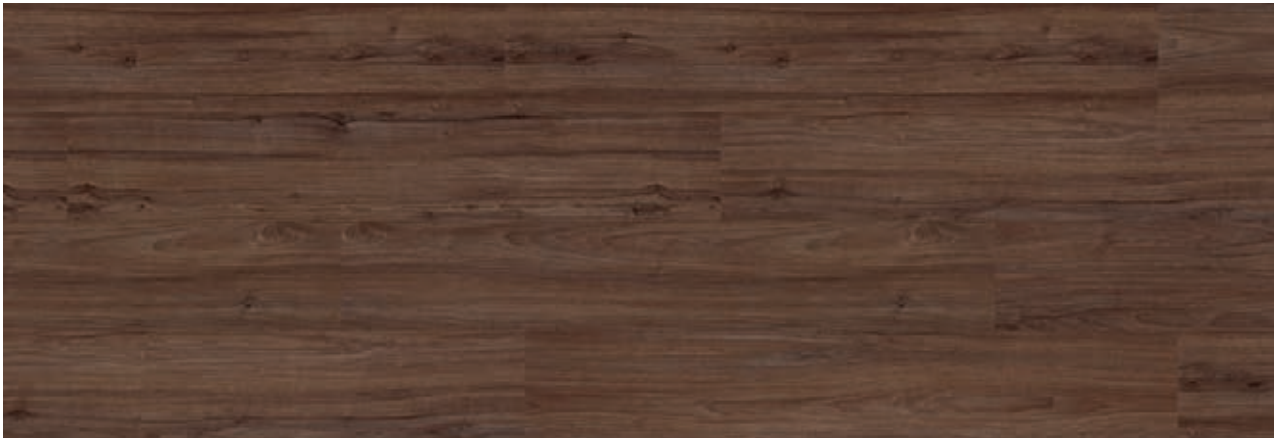
Mayfield Oak Brown PL15212WXL 1500 × 250 mm | PL15212WXS 480 × 80 mm



Siena Oak Brown PL15220WXL 1500 × 250 mm | PL15220WXS 480 × 80 mm | PLR15220W 20 × 2 m



Melbourne Oak Brown PL15222WXL 1500 × 250 mm | PL15222WXS 480 × 80 mm | PLR396C 20 × 2 m



Lugano Walnut Brown PL15210WXL 1500 × 250 mm | PL15210WXS 480 × 80 mm



Lugao Walnut Brown | Metropolitan Marble Dark

wineo 1500 tile | stone



Serene Marble Light
PL15409SXL
1000 × 500 mm



Serene Marble Grey
PL15412SXL
1000 × 500 mm



Serene Marble Nature
PL15410SXL
1000 × 500 mm



Serene Marble Dark
PL15411SXL
1000 × 500 mm



Modern Stone Grey
PL15404SXL
1000 × 500 mm



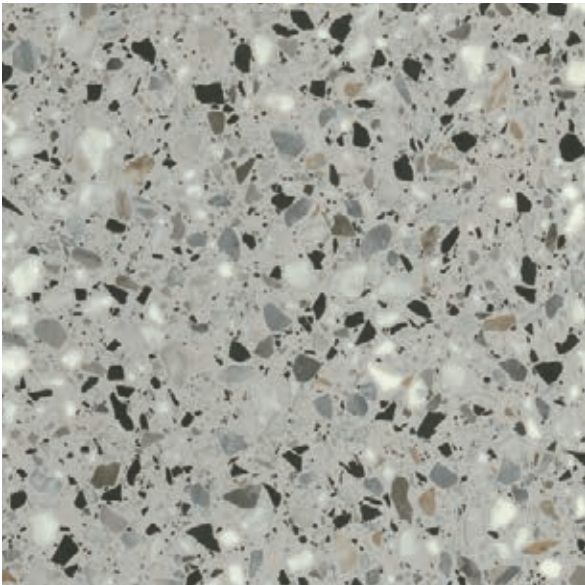
Modern Stone Dark
PL15403SXL
1000 × 500 mm



Serene Marble Light



Portland Concrete Light
PL15408SXL
1000 × 500 mm



Venice Terrazzo Grey
PL15413SXL
1000 × 500 mm



Loft Concrete Grey
PL15401SXL
1000 × 500 mm



Loft Concrete Dark
PL15400SXL
1000 × 500 mm



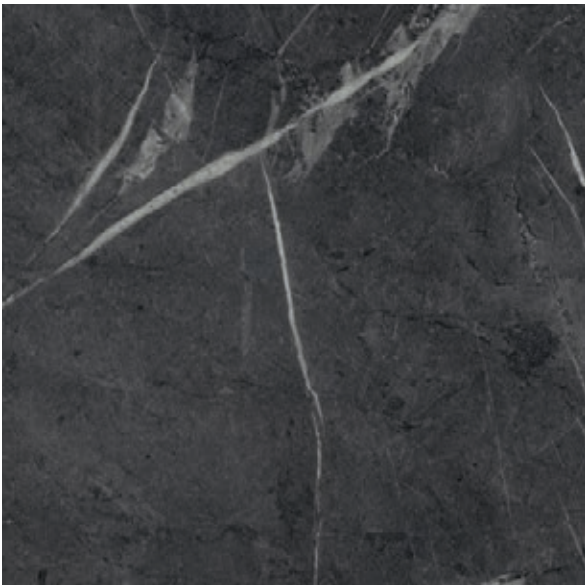
Portland Concrete Grey
PL15407SXL
1000 × 500 mm



Olevano Marble Grey
PL15405SXL
1000 × 500 mm



Portland Concrete Dark
PL15406SXL
1000 × 500 mm



Metropolitan Marble Dark
PL15402SXL
1000 × 500 mm



Portland Concrete Light

wineo 1500 tile | graphic



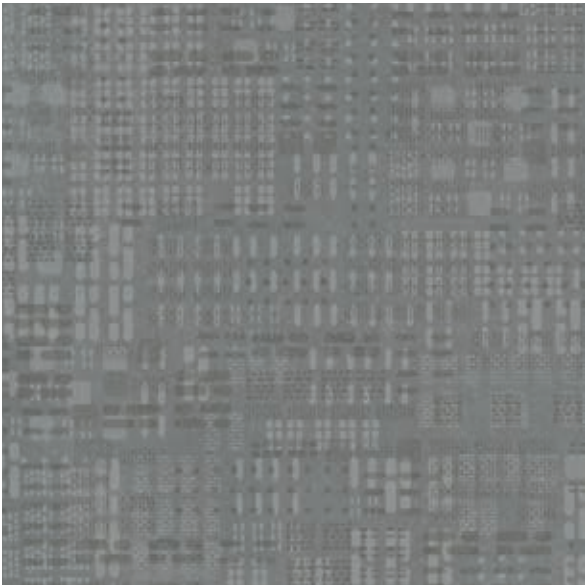
Fractal Ecru
PL15601GXL
1000 × 500 mm



Fractal Light
PL15603GXL
1000 × 500 mm



Fractal Grey
PL15602GXL
1000 × 500 mm



Fractal Dark
PL15600GXL
1000 × 500 mm



Fractal Opus
PL15604GXL
1000 × 500 mm



Fractal Wave
PL15605GXL
1000 × 500 mm



wineo 1500 tile | textile



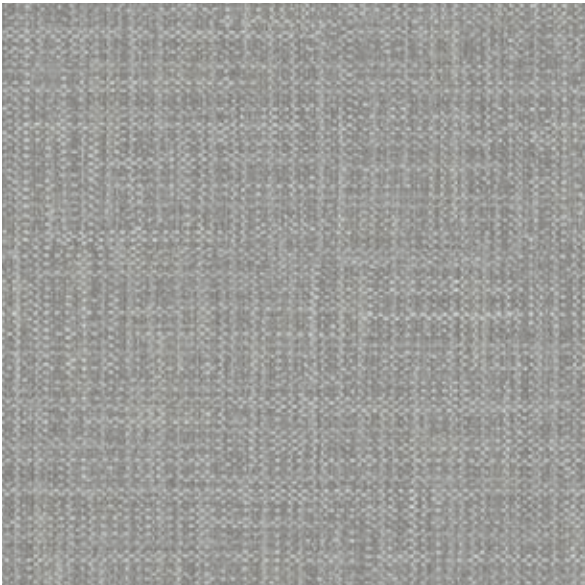
Oxford Oyster
PL15502TXL
1000 × 500 mm



Oxford Flint
PL15505TXL
1000 × 500 mm



Oxford Steel
PL15504TXL
1000 × 500 mm



Oxford Slate
PL15503TXL
1000 × 500 mm



Oxford Ocean
PL15501TXL
1000 × 500 mm



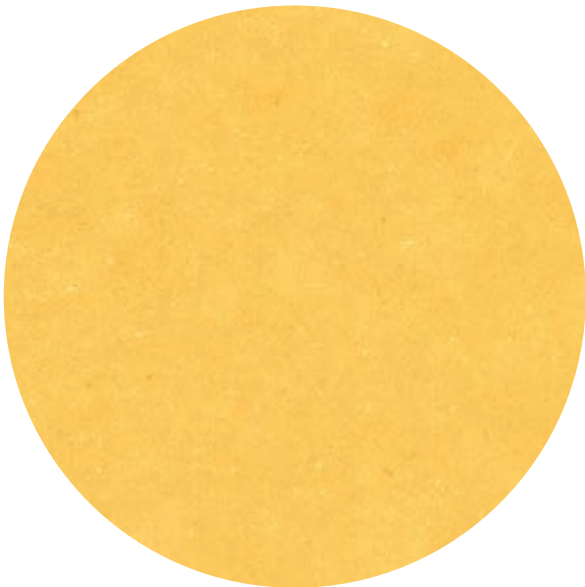
Oxford Denim
PL15500TXL
1000 × 500 mm



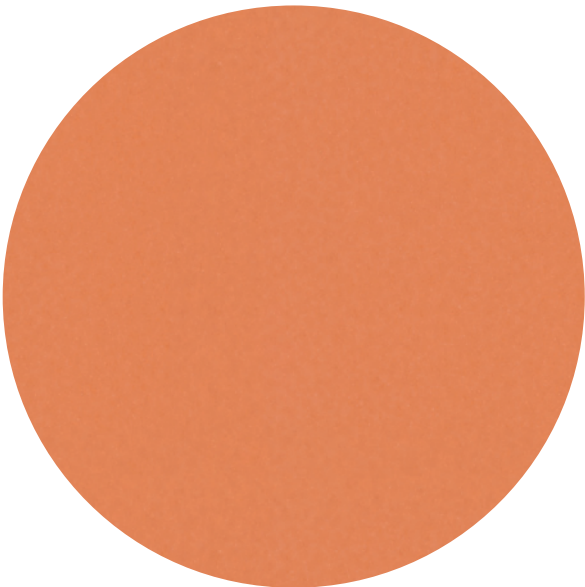


20 × 2 m
chip | wood

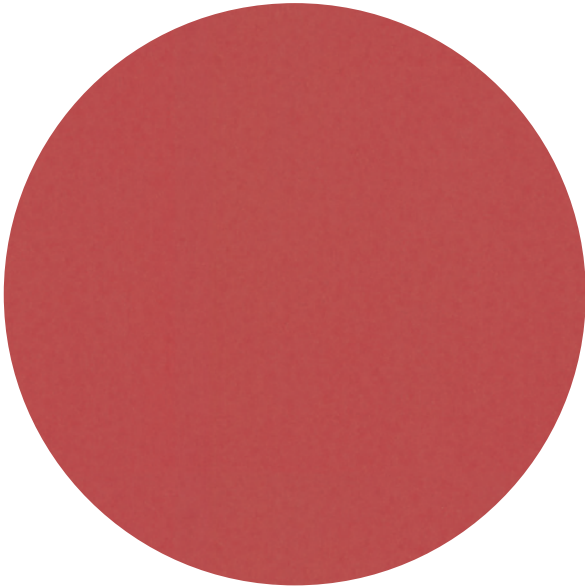
roll



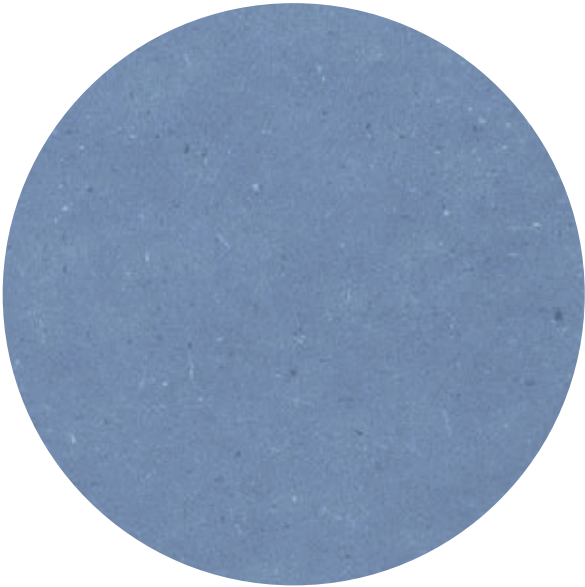
Honey Mustard
PLR128C 20 × 2 m



Tropical Orange
PLR386C 20 × 2 m



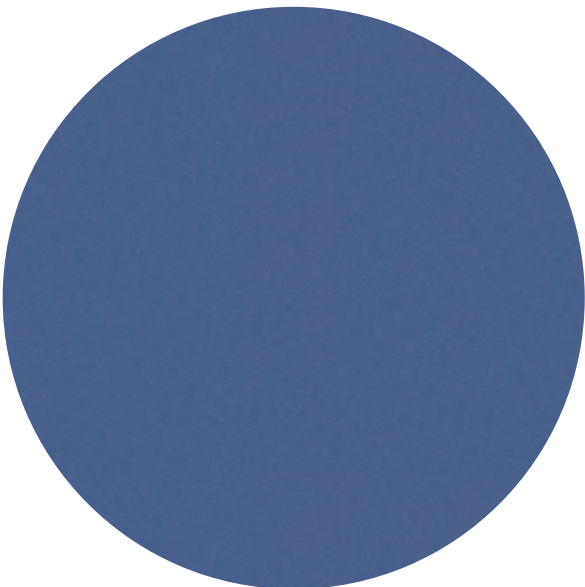
Cherry Red
PLR387C 20 × 2 m



Summer Sky
PLR014C 20 × 2 m



Apple Green
PLR185C 20 × 2 m

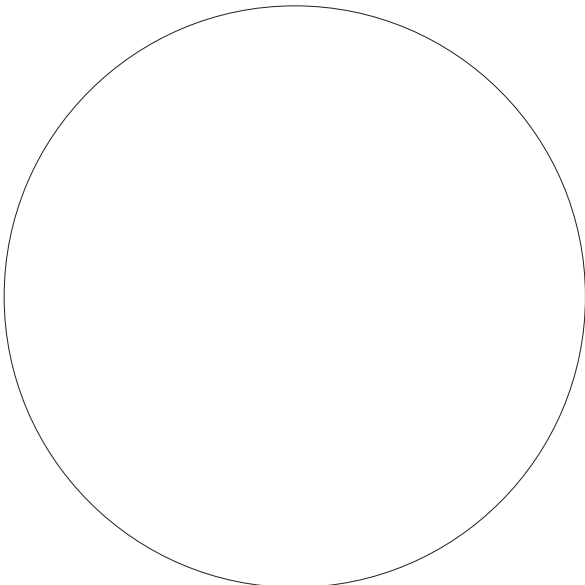


Royal Blue
PLR385C 20 × 2 m



Royal Blue | Fountain Blue | Almond Beige

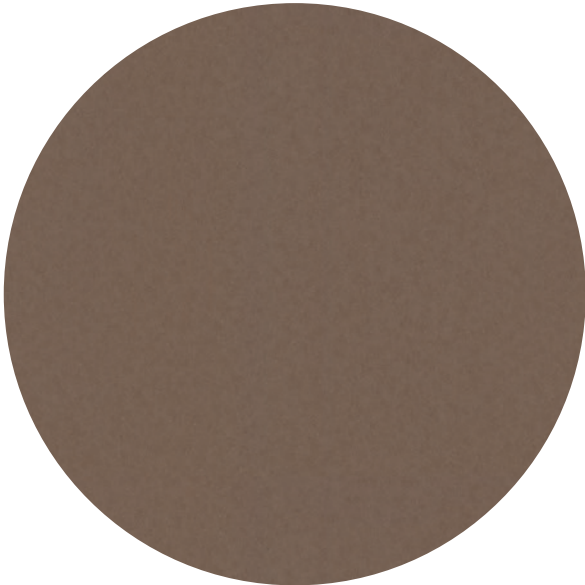
wineo 1500 roll | chip



Pure White
PLR025C 20 × 2 m



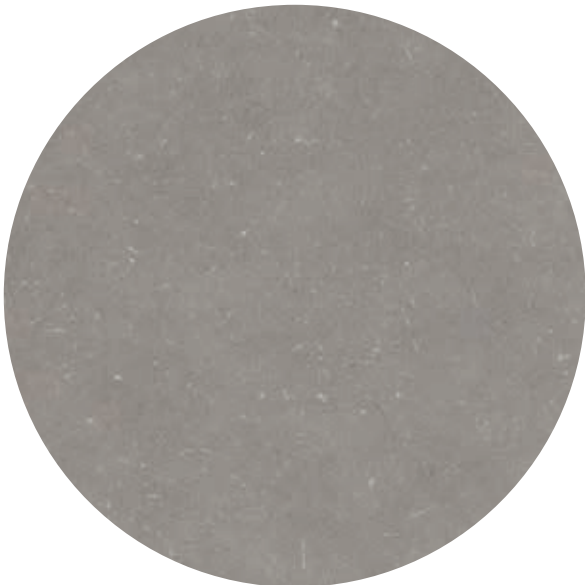
Cotton Beige
PLR383C 20 × 2 m



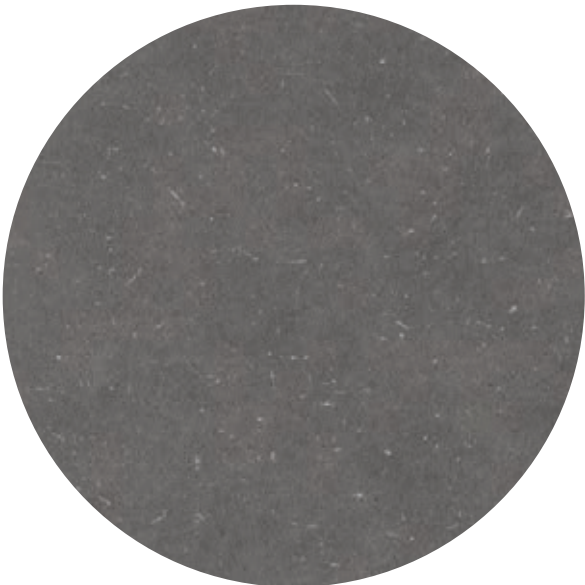
Chocolate Brown
PLR384C 20 × 2 m



Light Grey
PLR021C 20 × 2 m



Silver Grey
PLR022C 20 × 2 m



Steel Grey
PLR023C 20 × 2 m



Silver Grey



wineo 1500 roll | chip 43





Sunshine Yellow
PLR377C 20 × 2 m



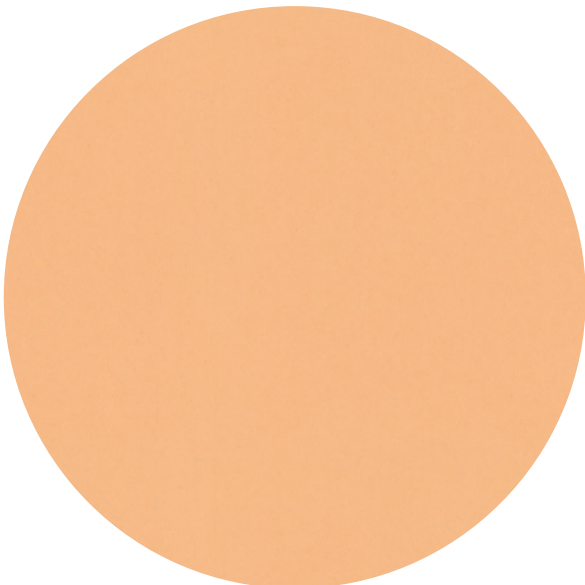
Jade Green
PLR373C 20 × 2 m



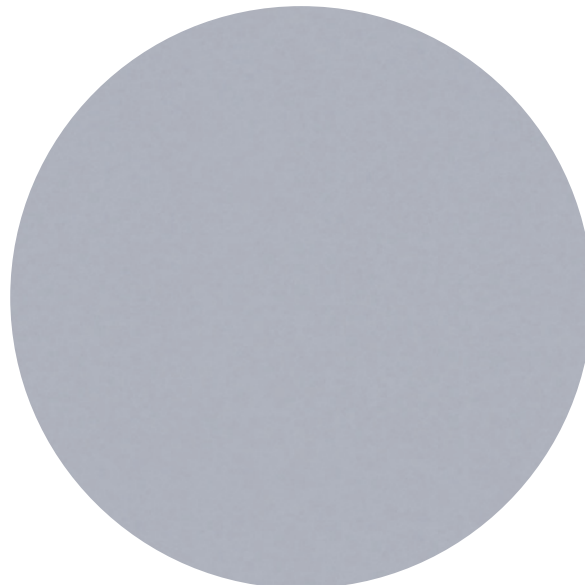
Almond Beige
PLR375C 20 × 2 m



Powder Rose
PLR374C 20 × 2 m



Springtime Orange
PLR378C 20 × 2 m



Fountain Blue
PLR376C 20 × 2 m



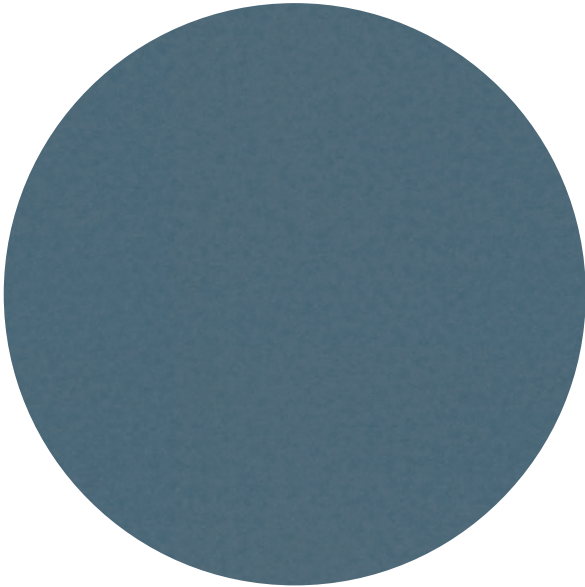
wineo 1500 roll | chip



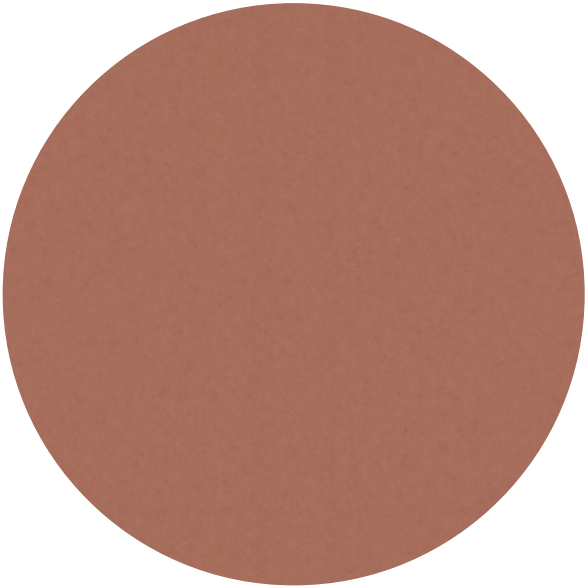
Aloe Green
PLR380C 20 × 2 m



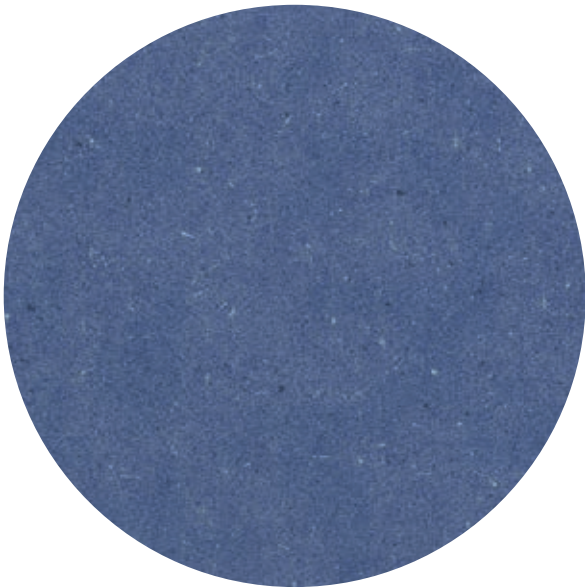
Wheat Brown
PLR379C 20 × 2 m



Ocean Blue
PLR381C 20 × 2 m



Rust Brown
PLR382C 20 × 2 m



Navi Blue
PLR129C 20 × 2 m



Melange
PLR003C 20 × 2 m



Ocean Blue | Melbourne Oak Brown



Fine Oak Light
PLR15203W 20 × 2 m | PL15203WXL 1500 × 250 mm | PL15203WXS 480 × 80 mm



Siena Oak Honey
PLR15221W 20 × 2 m | PL15221WXL 1500 × 250 mm | PL15221WXS 480 × 80 mm



Newport Oak Brown
PLR394C 20 × 2 m | PL15007WL 1200 × 200 mm



Siena Oak Brown
PLR15220W 20 × 2 m | PL15220WXL 1500 × 250 mm | PL15220WXS 480 × 80 mm



Mayfield Oak Nature
PLR15213W 20 × 2 m | PL15213WXL 1500 × 250 mm | PL15213WXS 480 × 80 mm



Newport Oak Natural
PLR393C 20 × 2 m | PL15008WL 1200 × 200 mm



Melbourne Oak Natural
PLR395C 20 × 2 m | PL15223WXL 1500 × 250 mm | PL15223WXS 480 × 80 mm



Melbourne Oak Brown
PLR396C 20 × 2 m | PL15222WXL 1500 × 250 mm | PL15222WXS 480 × 80 mm



Halifax Oak Natural
PLR389C 20 × 2 m



Mayfield Oak Taupe
PLR15214W 20 × 2 m | PL15214WXL 1500 × 250 mm | PL15214WXS 480 × 80 mm



Fine Oak Brown
PLR15202W 20 × 2 m | PL15202WXL 1500 × 250 mm | PL15202WXS 480 × 80 mm



Halifax Oak Brown
PLR390C 20 × 2 m

wineo 1500 roll | wood



Napa Walnut Rust
PLR388C 20 × 2 m



Durban Oak Taupe
PLR391C 20 × 2 m | PL15003WL 1200 × 200 mm



Napa Walnut Brown
PLR136C 20 × 2 m



Durban Oak Brown
PLR392C 20 × 2 m | PL15002WL 1200 × 200 mm





1000 × 500 mm
fusion XL



20 × 2 m
fusion

fusion



pure.three

wineo 1500 fusion

Especially adapted to the needs of architects and planners, the wineo 1500 fusion offers the matching grey tone for all furnishing concepts. Whether light or dark tones, summerly warm or pleasantly cool – the 16 different designs distinguish themselves and integrate perfectly into the existing colour concept of your room.

wineo 1500 fusion is available as a roll (fusion) and as a tile (fusion XL).



Photos: © Laura Thiesbrummel



reddot award 2019
winner

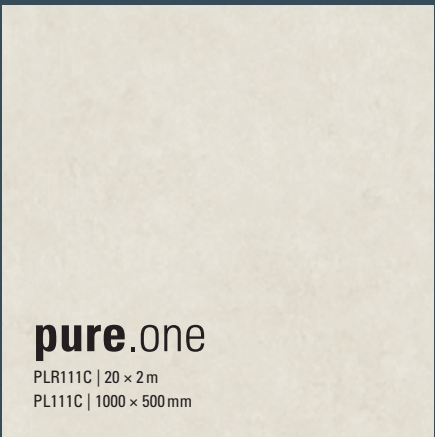
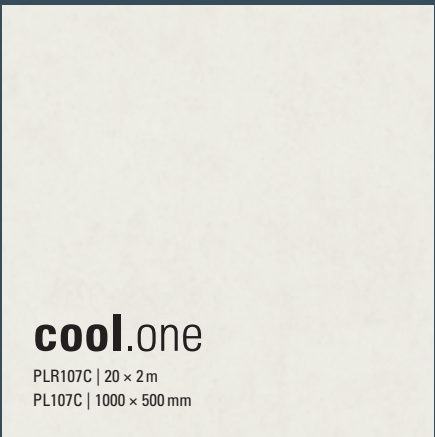
cool

pure

warm

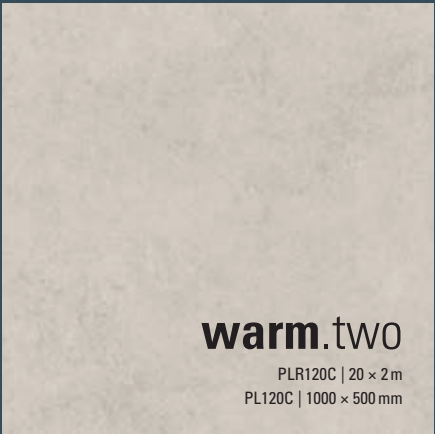
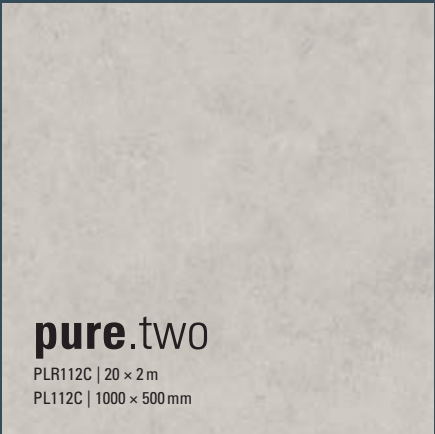
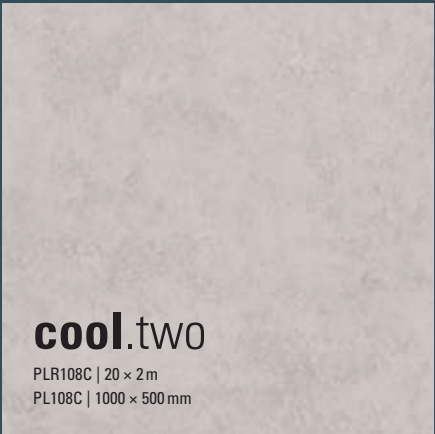
bright

one



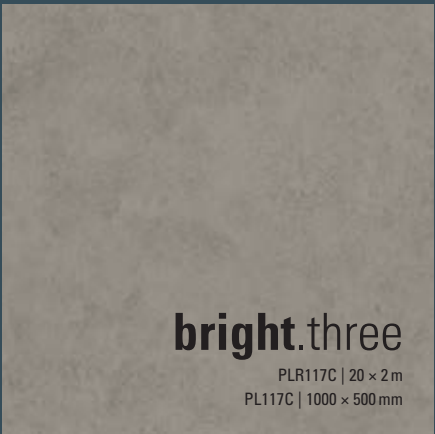
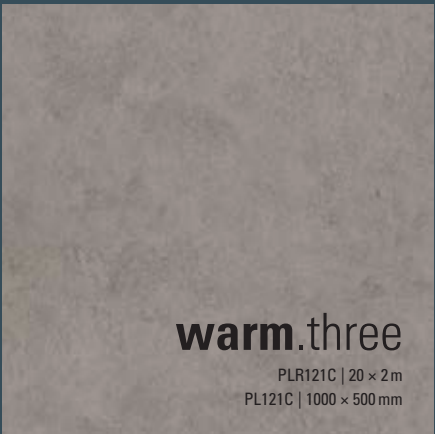
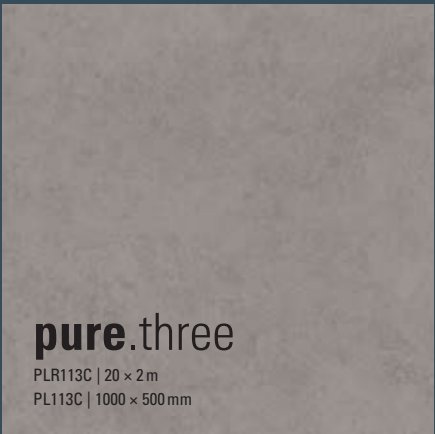
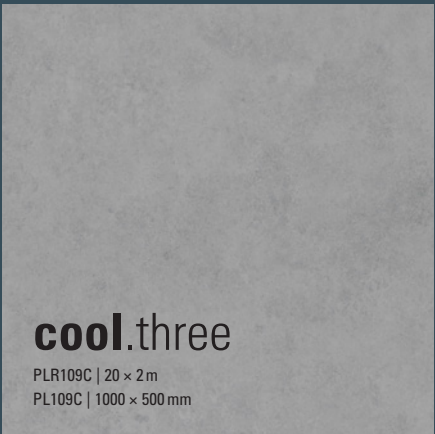
one

two



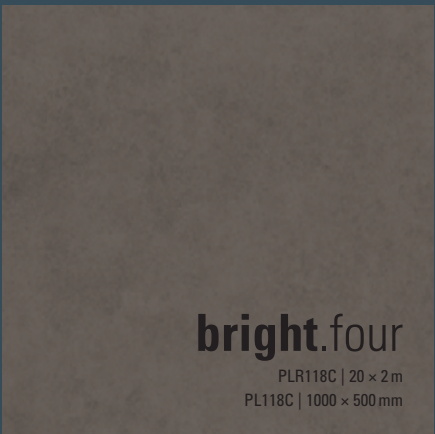
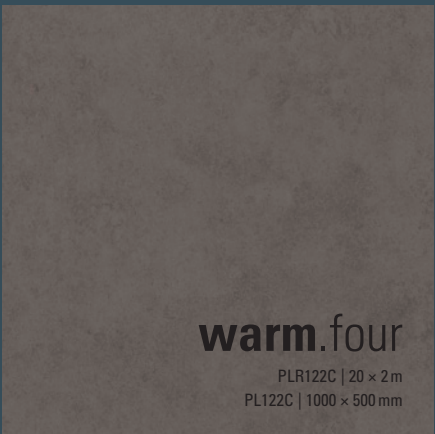
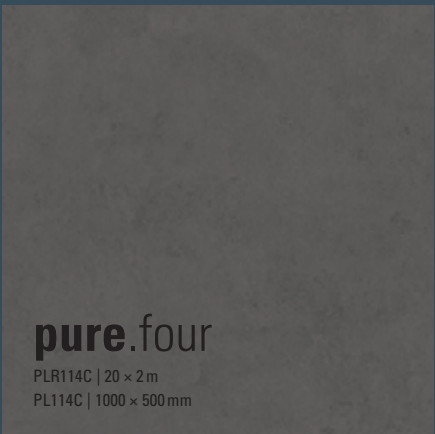
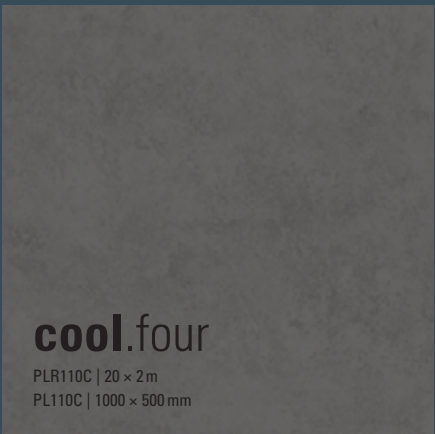
two

three



three

four



four

wineo 1500 sea

Special for the Shipbuilding and Offshore Industries

- 100% Made in Germany
- no addition of chlorine, no plasticisers and no solvents
- absolutely odourless
- does not release any harmful substances into the room air or the environment
- extremely hard-wearing

Application areas

- Corridors and hallways
- Sports and fitness rooms
- Catering and dining rooms
- Suites



All other standard formats in the collection are also available on request, MOQ 100 m².

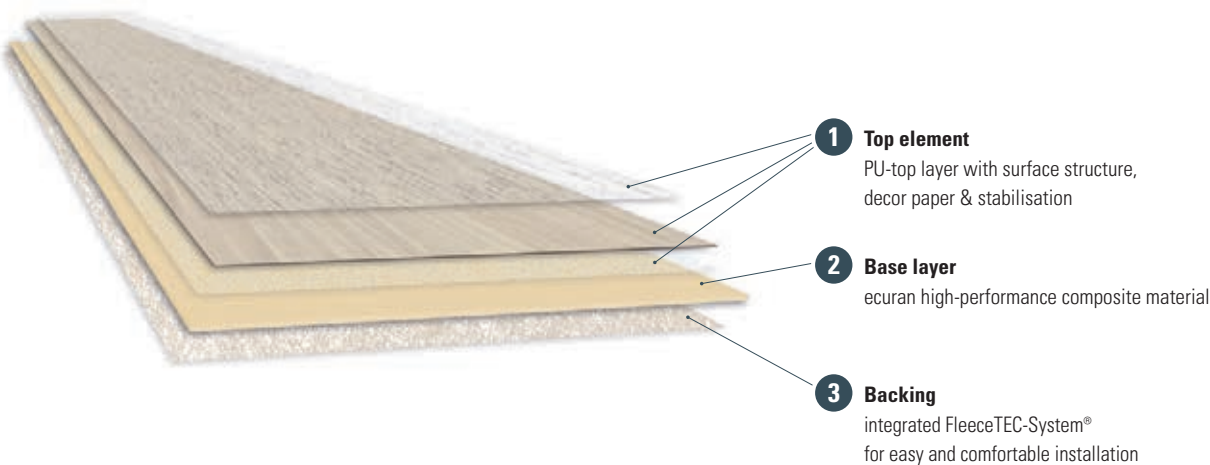


wineo 1500

Product composition

wood XS | wood L | wood XL | stone XL | wood | chip | fusion | fusion XL

Of course, the inner values are also important. And here, too, wineo 1500 is convincing in all areas. With the best ingredients, according to the ecuran organic recipe. The matching PU underlay mat for maximum footfall and walking noise reduction is available as an option.



- 1 Top element**
PU-top layer with surface structure, decor paper & stabilisation
- 2 Base layer**
ecuran high-performance composite material
- 3 Backing**
integrated FleeceTEC-System® for easy and comfortable installation

wineo 1500

Accessories



Self-adhesive mats

- fast, quiet, clean, odourless and immediately accessible
- no use of liquid adhesive
- 100 % Made In Germany
- additional footfall and walking noise reduction
- can be laid on existing floor coverings



Skirting boards

- decor matching MDF skirtings for all wineo floor coverings
- universally usable skirtings MDF
- installation heights from 60 mm and 80 mm
- plastic mounting clips included in the range of accessories; alternatively glue or tack
- self-adhesive corner elements for easy installation



Skirting boards | External corners | Weld rods

Particularly in sensitive areas such as healthcare, in which maximum cleanliness and hygiene are crucial, skirting boards and external corners are indispensable. They connect the wall and the floor perfectly, thereby creating a particularly neat and absolutely impermeable final sealing. Our prefabricated skirting boards and external corners for wineo PURLINE® organic flooring are available in every design

promoted via the collections and are always manufactured for you on an order basis. The associated PURLINE® fusewires for seamless welding, are also available for every design.

Detailed information can be found in our accessories brochure.

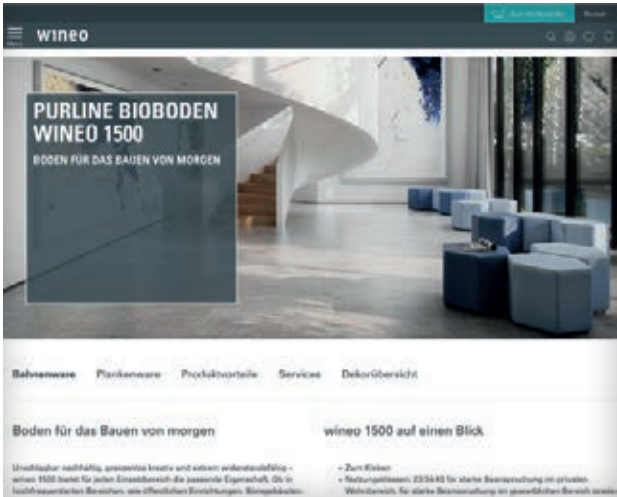


wineo 1500

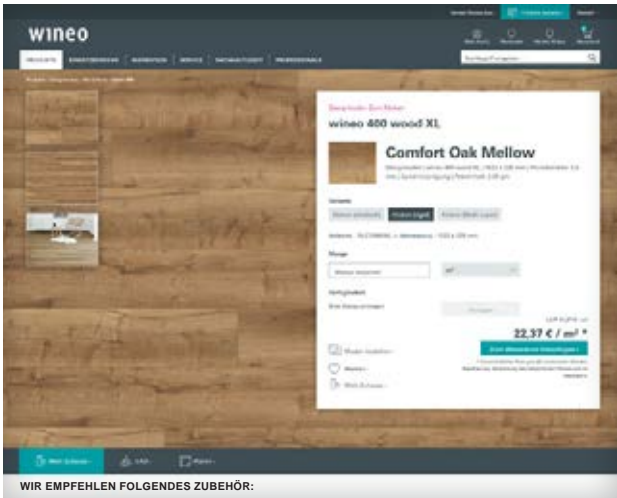
Service



Technical Support
Do you have any questions about our products, their areas-of application or their installation? Our capable technical-team is happy to help you:
Tel.: +49 (0) 52 37 609 – 530



- en.wineo.de**
- Even more information is available on our website:
- dealer portal with direct ordering option
 - our top reference projects
 - tender specifications
 - technical data sheets
 - cleaning and installation instructions
 - find a dealer
 - video portal with lots of tips
 - newsletter registration
 - and much more



- Partnerportal at en.wineo.de**
- simple ordering of products
 - real-time enquiry of product availability
 - quick entry of orders
 - order status and shipment tracking
 - optimum customer advice with the advisor mode
 - customised price list available
 - access to image data for all products



Social Media
Inspiration and product-specific knowledge in exciting short articles – you can discover under:

- Instagram
- Facebook
- YouTube
- Pinterest
- LinkedIn




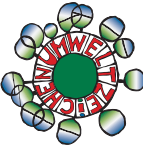















wineo Floor Viewer
Any wineo floor can be simulated in your own home in an instant with our wineo Floor Viewer. The ideal way to choose the perfect flooring for you.

Test the wineo Floor Viewer now at **floorviewer.wineo.de** or by QR code.










We focus on transparency.

Environmental certifications		
	<p>Cradle to Cradle®</p> <p>The Cradle to Cradle® certification confirms the utilisation of environmentally safe, healthy and reusable materials (technical reutilisation) and the use of solar power or other regenerative sources of energy, together with responsible water stewardship and strategies adopted by a company to embrace its responsibility to society.</p>	✓
 <div>www.blauer-engel.de/uz120 www.blauer-engel.de/uz156 www.blauer-engel.de/uz176</div>	<p>Blue Angel (Blauer Engel)</p> <p>The “Blue Angel” guarantees that our products and services fulfil high requirements placed on environmental, health and usage properties. Criteria are compiled for each product group, which are checked every three to four years by the Federal Environment Agency.</p>	✓
	<p>eco-INSTITUT-label</p> <p>The eco-INSTITUT label confirms that a product complies with certain environmentally friendly and health standards. The label signals to consumers that the certified product is environmentally friendly and has been tested for harmful substances, which promotes transparency and trust with regard to sustainability and health aspects.</p>	✓
	<p>Austrian eco-label (Österreichisches Umweltzeichen)</p> <p>The “Österreichisches Umweltzeichen” (Austrian eco-label) assesses products from quality, health-related and ecological standpoints. Basically, products can only be certified if they are harmless health-wise. The fulfilment of the criteria is checked every four years.</p>	✓
	<p>Greenguard</p> <p>The Greenguard certificate ensures that a product fulfils the strictest and most comprehensive requirements for emissions of Volatile Organic Compounds (VOCs) into the air.</p>	✓
	<p>Declare</p> <p>Voluntary self-disclosure programme aimed at transforming the building materials industry into a healthier and more environmentally friendly product through transparency of ingredients used. By participating in Declare, manufacturers are obligated to disclose all ingredients.</p>	✓
	<p>M1</p> <p>Just like the “Blue Angel” quality mark in Germany, the M1 seal in the Finnish market labels our products as environmentally friendly, health-friendly and consumer-friendly. The focus is on emissions of Volatile Organic Compounds (VOCs).</p>	✓
	<p>A+</p> <p>Just like the “Blue Angel” in Germany, the A+ seal identifies our products as ecological, healthy and user-friendly in the french market.</p>	✓
	<p>TFI-TÜV PROFICERT PREMIUM for Multi-Layer</p> <p>The TFI (Textiles & Flooring Institute GmbH) and the TÜV Hessen evaluate products based on qualitative, health and ecological principals. Fundamentally, only products that are considered harmless to health can be certified.</p>	✓

Environmental certifications		
	<p>KfB</p> <p>Award from the competence centre for dynamic processes at Bielefeld University of Applied Sciences (FH). The flooring product Purline has passed the dynamic standard examination of rolling behaviour in accordance with the KfB roadmap.</p>	✓
	<p>eco-bau Switzerland (eco-bau Schweiz)</p> <p>Eco-Bau assesses the ecological aspects of building materials and services. It encompasses all of the significant environmental effects during the entire lifespan of the materials. The assessment is made on the basis of the following criteria: conservation of natural resources, energy for producing materials, solvent emissions, presence of environmentally and health-damaging components, emission of heavy metals and other damaging substances.</p>	✓
	<p>FloorScore®</p> <p>With SCS Global Services' FloorScore® certificate program manufacturers of floor coverings can assess the conformity of their products with the emission requirements in the U.S. but also worldwide utilized building evaluation systems, such as LEED clearly.</p>	✓
Building certification / Product declaration		
	<p>BREEAM</p> <p>The British sustainability certificate for development projects is used in 15 other countries.</p>	✓
	<p>DGNB</p> <p>Certification system of the German Sustainable Building Council and the Federal Ministry of Transport, Building and Urban Affairs. Evaluates a building's quality over its entire life cycle and is internationally applicable.</p>	✓
	<p>LEED</p> <p>Rating system of the US Green Building Council. It considers the regional and local criteria according to global standards. The use of building materials with cradle to cradle proof is evaluated with bonus points.</p>	✓
	<p>WELL</p> <p>The WELL Building Standard (WELL) focuses on health and well-being of the people within in the building.</p>	✓
	<p>EPD</p> <p>The environmental product declarations is a transparancy tool for the sustainability valuation of products. It is the basis for sustainability calculations for buildings.</p>	✓

wineo 1500

Technical characteristics

wineo 1500	wood XS *	wood L	wood XL	stone XL graphic XL textile XL	fusion XL	roll chip wood fusion	sea **
Installation type	 Glue	 Glue	 Glue	 Glue	 Glue	 Glue	 Glue
Utilisation classes EN ISO 10874	23 / 34 / 43	23 / 34 / 43	23 / 34 / 43	23 / 34 / 43	23 / 34 / 43	23 / 34 / 43	23 / 34 / 43
Format	480 × 80 mm	1200 × 200 mm	1500 × 250 mm	1000 × 500 mm	1000 × 500 mm	20 × 2 m	20 × 2 m*
Product thickness	2.5 mm	2.5 mm	2.5 mm	2.5 mm	2.5 mm	2.5 mm	2.5 mm
Content / box	40 / 1.54 m²	20 / 4.80 m²	12 / 4.50 m²	10 / 5.00 m²	10 / 5.00 m²	1 / 40 m²	1 / 40 m²
Boxes / pallet	144 / 221.76 m²	60 / 288.00 m²	56 / 252.00 m²	54 / 270 m²	50 / 250 m²	6 / 240 m²	6 / 240 m²
Weight	3.40 kg / m²	3.40 kg / m²	3.40 kg / m²	3.40 kg / m²	3.40 kg / m²	3.40 kg / m²	3.20 kg / m²
Staining / chemical resistance EN ISO 26987	very good resistance with regards to concentration and exposure time						
Reaction to fire EN 13501-1	C _{fl} - s1	C _{fl} - s1	C _{fl} - s1	C _{fl} - s1	C _{fl} - s1	C _{fl} - s1	C _{fl} - s1
Anti slip category DIN 51130	R9	R9	R9	R9	R9	R9	R9
Light fastness EN ISO 105-B02	~ 7	~ 7	~ 7	~ 7	~ 7	~ 7	~ 7
Residual indentation EN ISO 24343-1	≤ 0.10 mm	≤ 0.10 mm	≤ 0.10 mm	≤ 0.10 mm	≤ 0.10 mm	≤ 0.10 mm	≤ 0.10 mm
Dimensional stability EN 434 / EN ISO 23999	≤ 0.15 %	≤ 0.15 %	≤ 0.15 %	≤ 0.15 %	≤ 0.15 %	≤ 0.15 %	≤ 0.15 %
Flexural behaviour EN ISO 24344	≥ 20 mm	≥ 20 mm	≥ 20 mm	≥ 20 mm	≥ 20 mm	≥ 20 mm	≥ 20 mm
Underfloor heating	Suitable for all conventional hot water underfloor heating and electrical systems regulated up to a surface temperature of 29 °C.						
Thermal resistance EN 12667	~ 0.01 (m²K) / W	~ 0.01 (m²K) / W	~ 0.01 (m²K) / W	~ 0.01 (m²K) / W	~ 0.01 (m²K) / W	~ 0.01 (m²K) / W	~ 0.01 (m²K) / W
Effect of a castor chair EN 425 / ISO 4918	25000 revolutions – no damage with rollers type W						
Impact sound reduction EN ISO 10140	~ 8 dB	~ 8 dB	~ 8 dB	~ 8 dB	~ 8 dB	~ 8 dB	~ 4 dB
Effect of a furniture leg EN 424	Foot type 2 – no visible changes						
Anti-static properties EN 1815	≤ 2 kV	≤ 2 kV	≤ 2 kV	≤ 2 kV	≤ 2 kV	≤ 2 kV	≤ 2 kV
Guarantee	en.wineo.de/service/guarantee						

* MOQ 50 m²

** All other standard formats in the collection are also available on request, MOQ 100 m².



Utilisation class 23:
Domestic area
with intensive usage



Utilisation class 34:
Very heavy-duty use
in the commercial sector



Utilisation class 43:
Heavy-duty use
in the light industrial sector

Alle decors shown in this brochure are reproductions. Windmöller GmbH provides no guarantee with regard to mistakes, printing errors and technical changes.

wineo

Windmüller GmbH
info@wineo.de
www.wineo.de

Member of

FEB **ERFMI.** **DGNB**

m
m
f
a

